

Respiratory Virus Summary (2022-2023 Season)

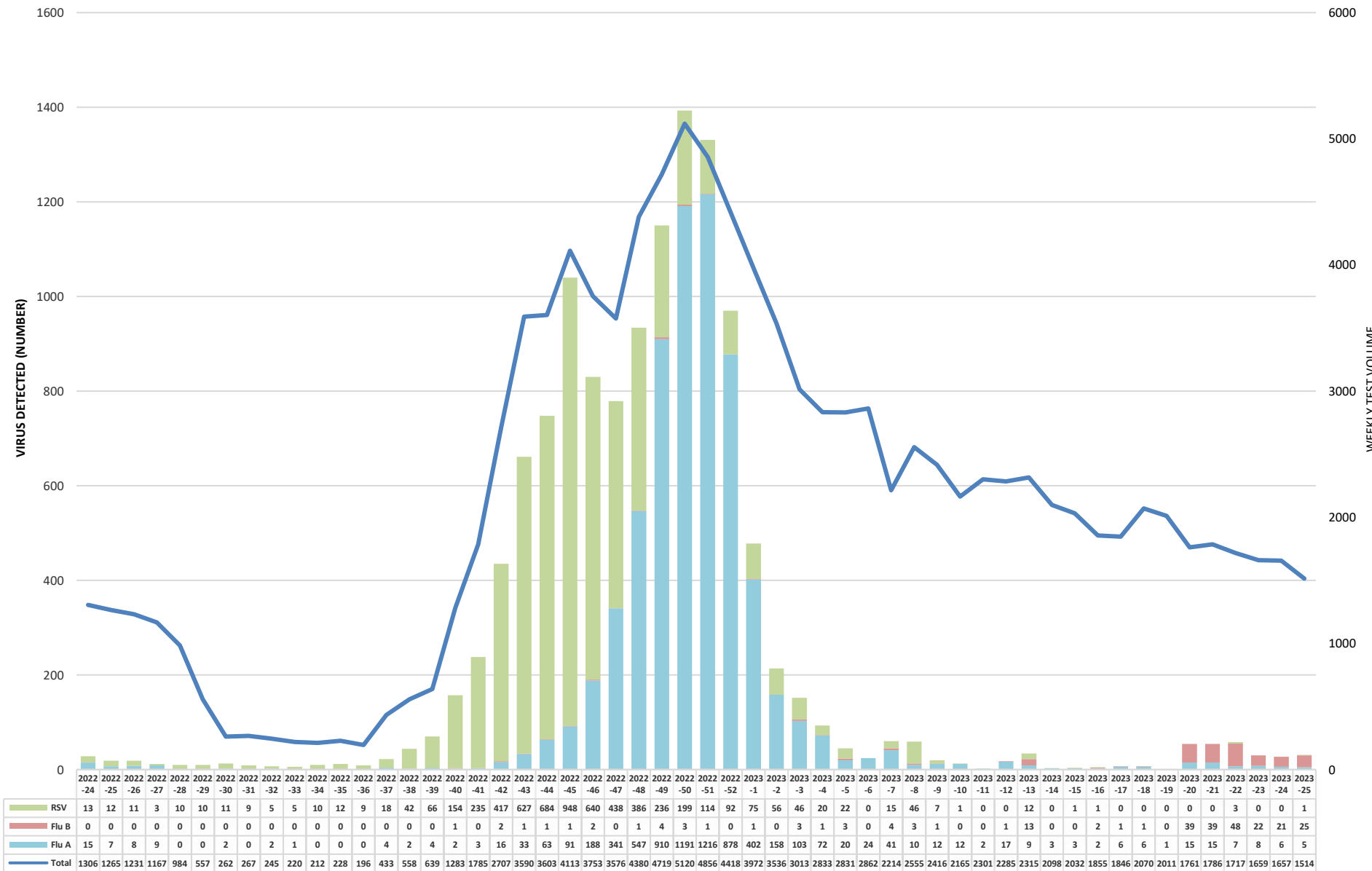
Week: 2023-51

Ending December 23, 2023

Beaumont

Rapid Influenza & RSV by PCR

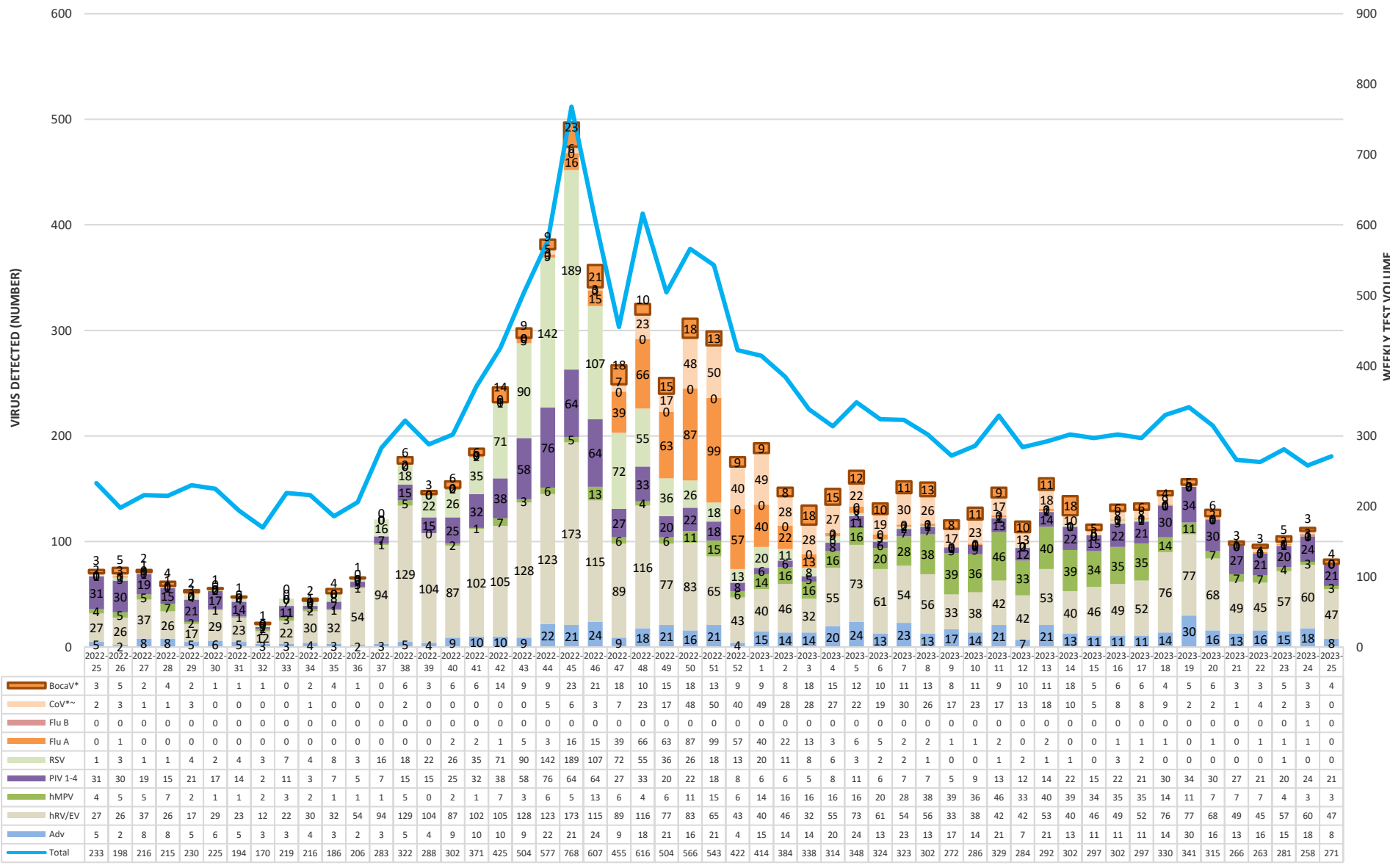
Beaumont



*Dearborn data added starting 2020-40

Respiratory Virus Panel by PCR

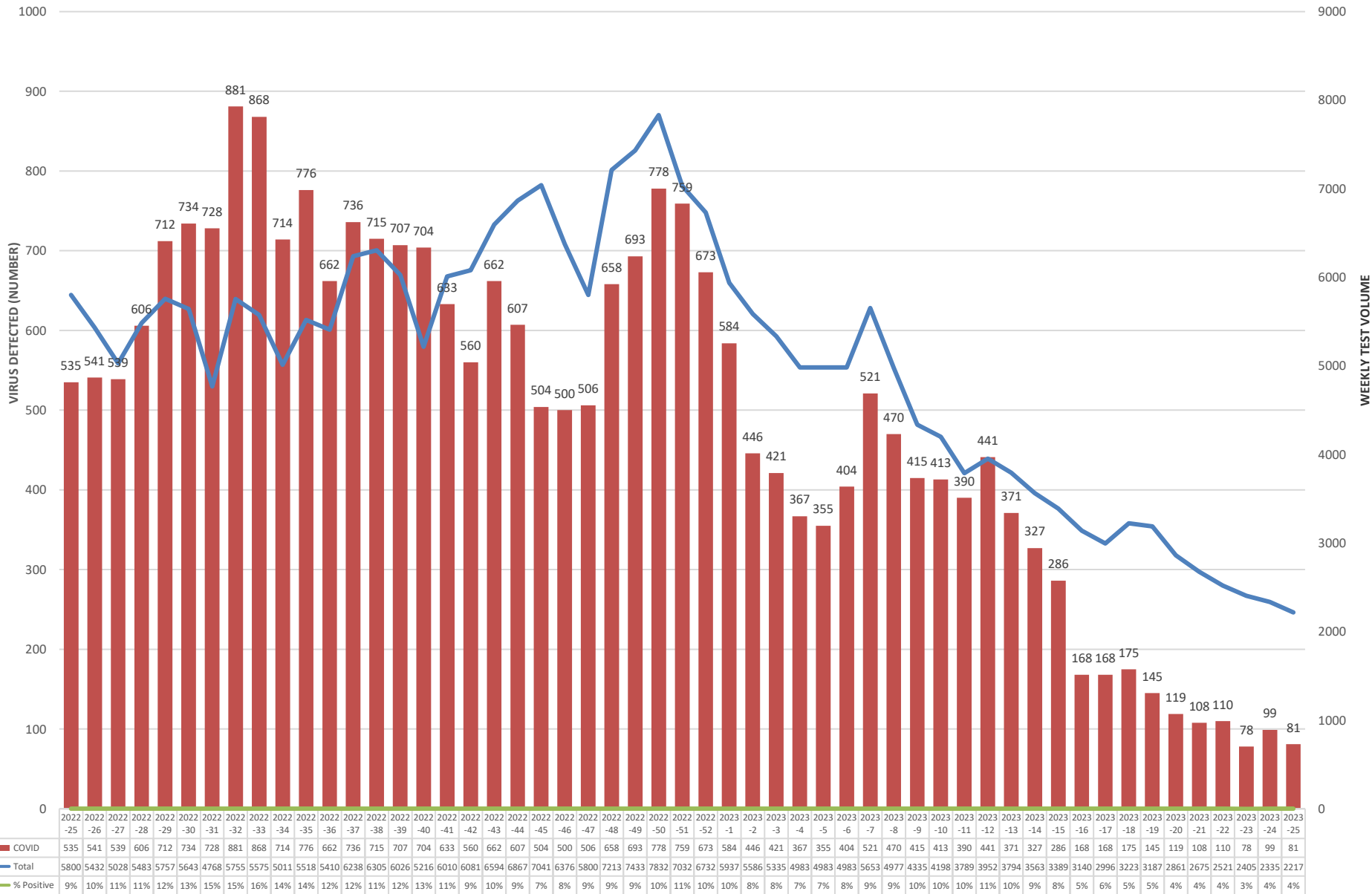
Beaumont



*SARS-CoV-2 data from the RVP is reported on slide 7, CoV data reported above is only seasonal coronaviruses

Beaumont Laboratory COVID-19 Testing

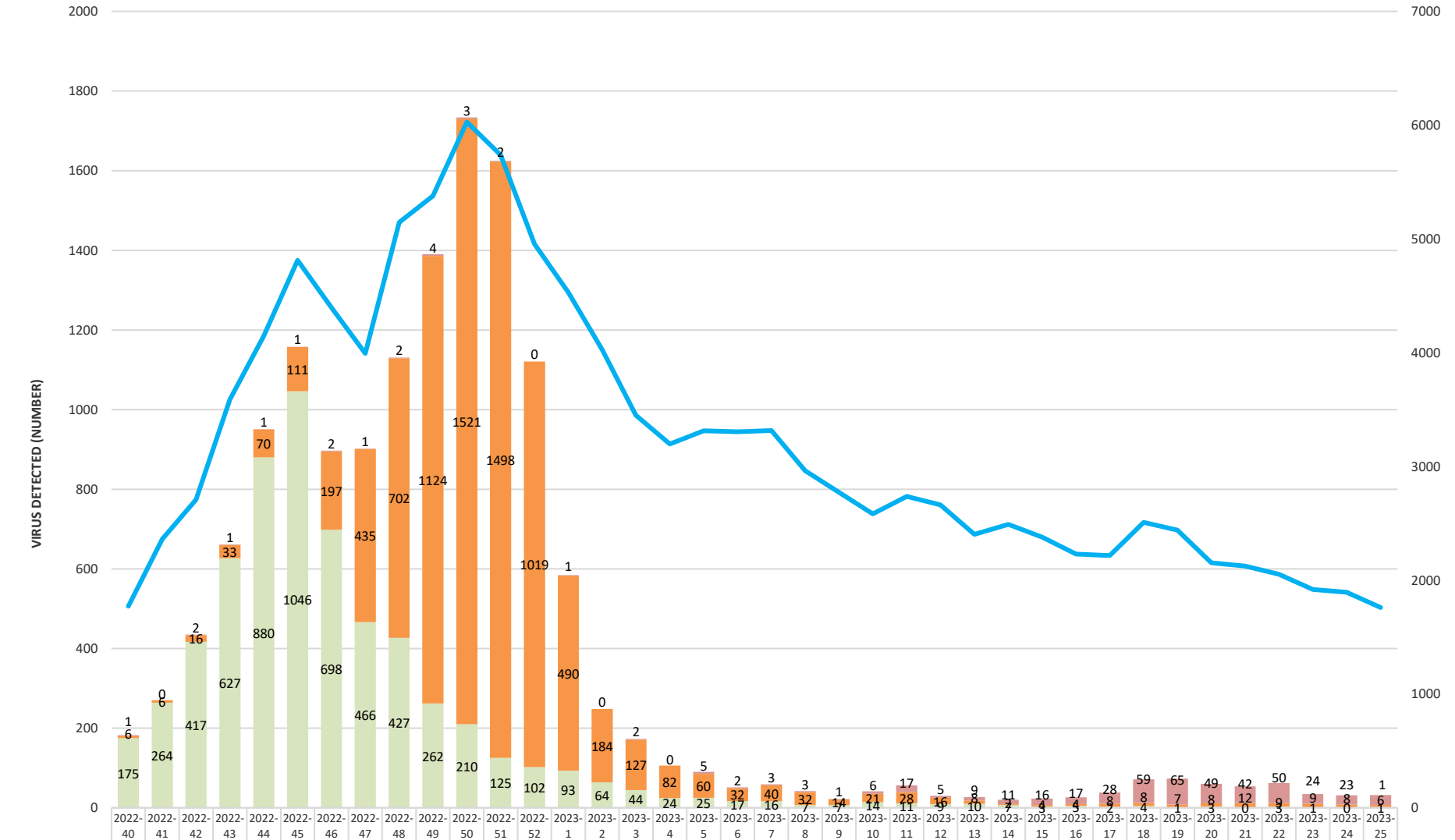
Beaumont



*Beaumont Laboratory data includes retests that may represent persistent infections. For primary infections only, please refer to the MDHHS website https://www.michigan.gov/coronavirus/0,9753,7-406-98163_98173---,00.html

Beaumont Laboratory Influenza and RSV Testing

Beaumont



Flu B	1	0	2	1	1	1	2	1	2	4	3	2	0	1	0	2	0	5	2	3	3	1	6	17	5	9	11	16	17	28	59	65	49	42	50	24	23	25
Flu A	6	6	16	33	70	111	197	435	702	1124	1521	1498	1019	490	184	127	82	60	32	40	32	14	21	28	16	8	2	4	4	8	8	7	8	12	9	9	8	6
RSV	175	264	417	627	880	1046	698	466	427	262	210	125	102	93	64	44	24	25	17	16	7	7	14	11	9	10	7	3	5	2	4	1	3	0	3	1	0	1
Total	1771	2362	2707	3590	4146	4812	4396	3994	5145	5378	6027	5739	4954	4531	4027	3449	3197	3313	3305	3316	2962	2771	2582	2737	2662	2404	2491	2380	2229	2217	2509	2441	2153	2125	2051	1918	1894	1760
% Positive	10.3%	11.4%	16.1%	18.4%	22.9%	24.1%	20.4%	22.6%	22.0%	25.8%	28.8%	28.3%	22.6%	12.9%	6.2%	5.0%	3.3%	2.7%	1.5%	1.8%	1.4%	0.8%	1.6%	2.0%	1.1%	1.1%	0.8%	1.0%	1.2%	1.7%	2.8%	3.0%	2.8%	2.5%	3.0%	1.8%	1.6%	1.8%