

# Respiratory Virus Summary (2022-2023 Season)

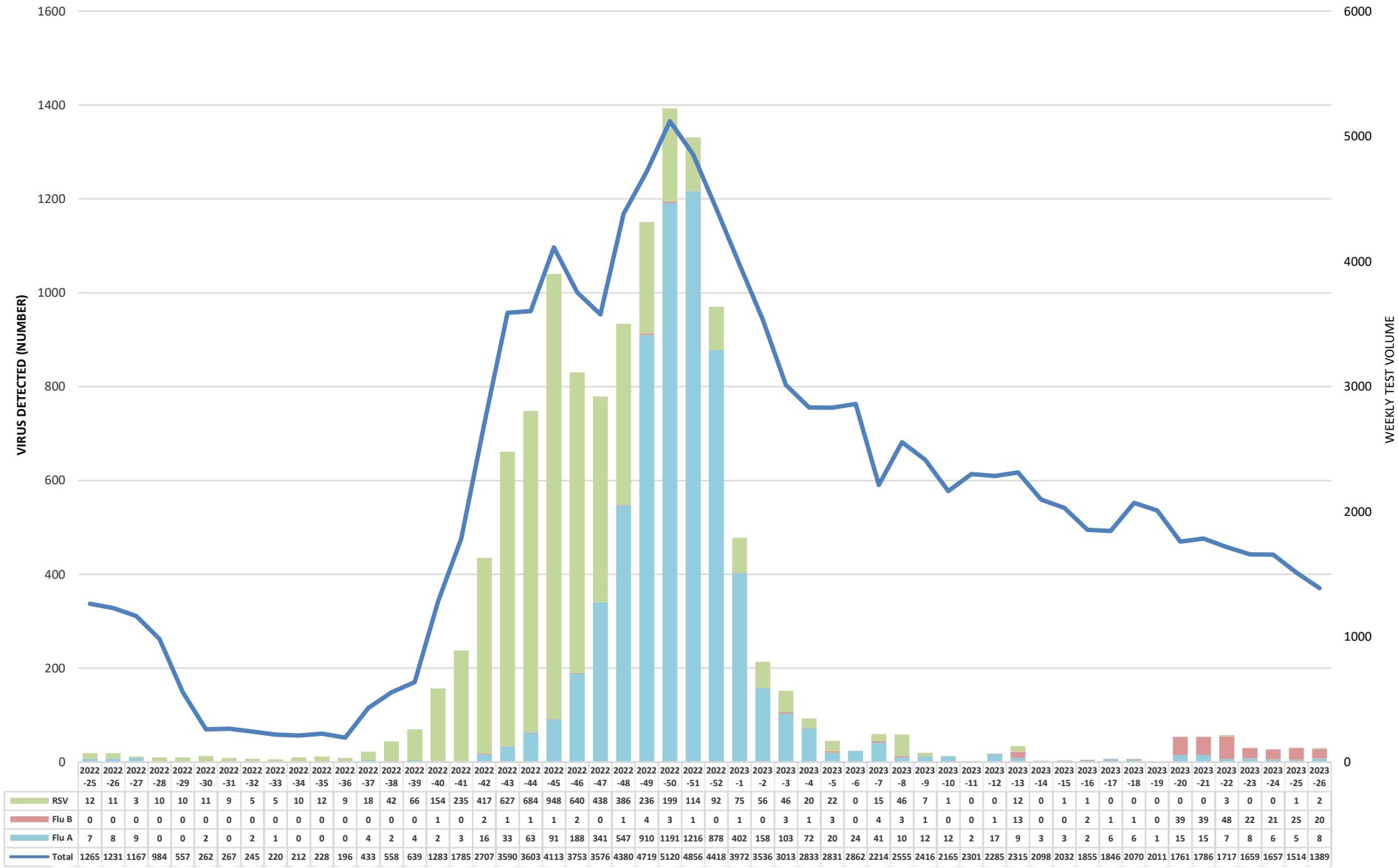
*Week: 2023-26*

*Ending July 1, 2023*

**Beaumont**

# Rapid Influenza & RSV by PCR

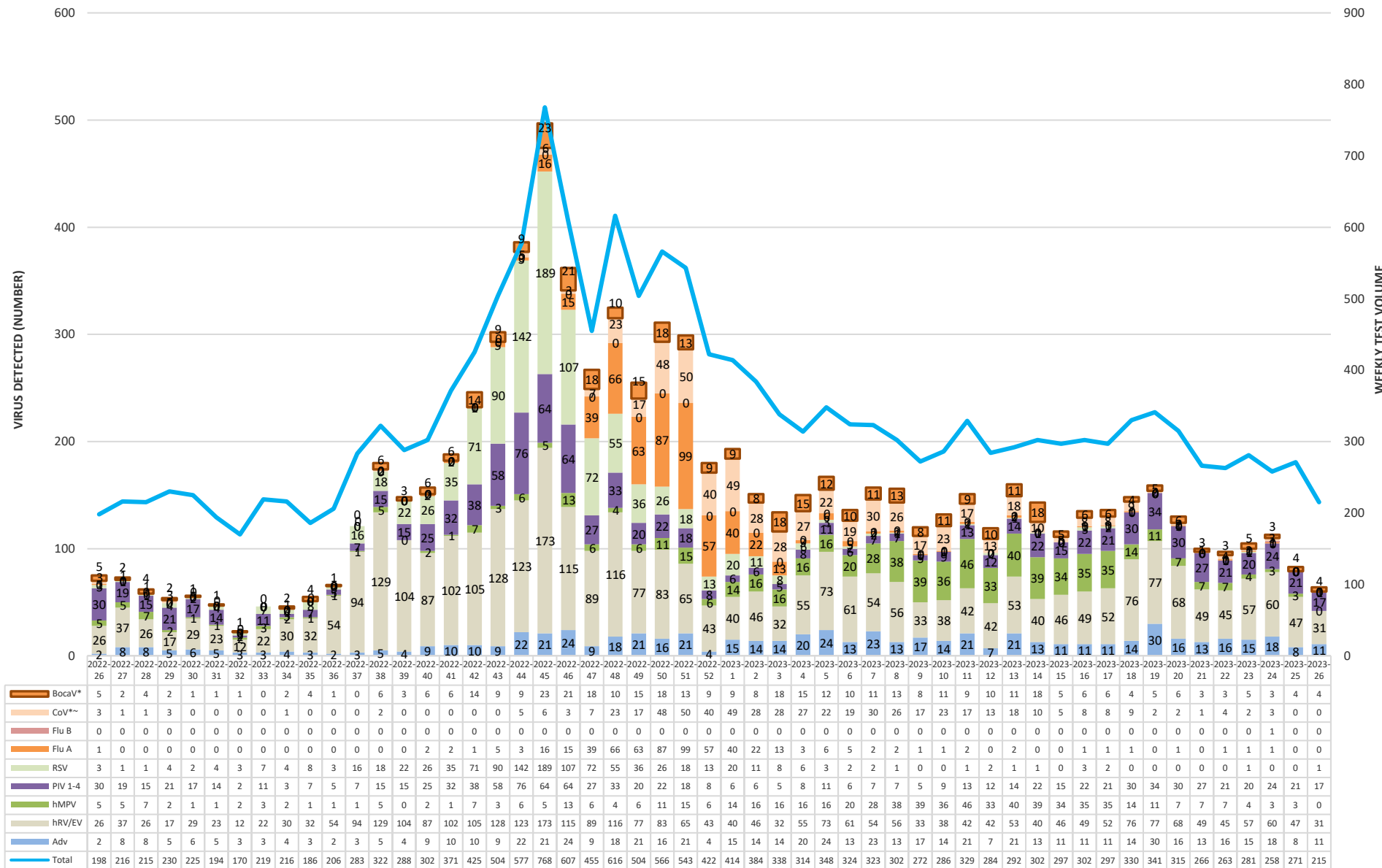
**Beaumont**



\*Dearborn data added starting 2020-40

# Respiratory Virus Panel by PCR

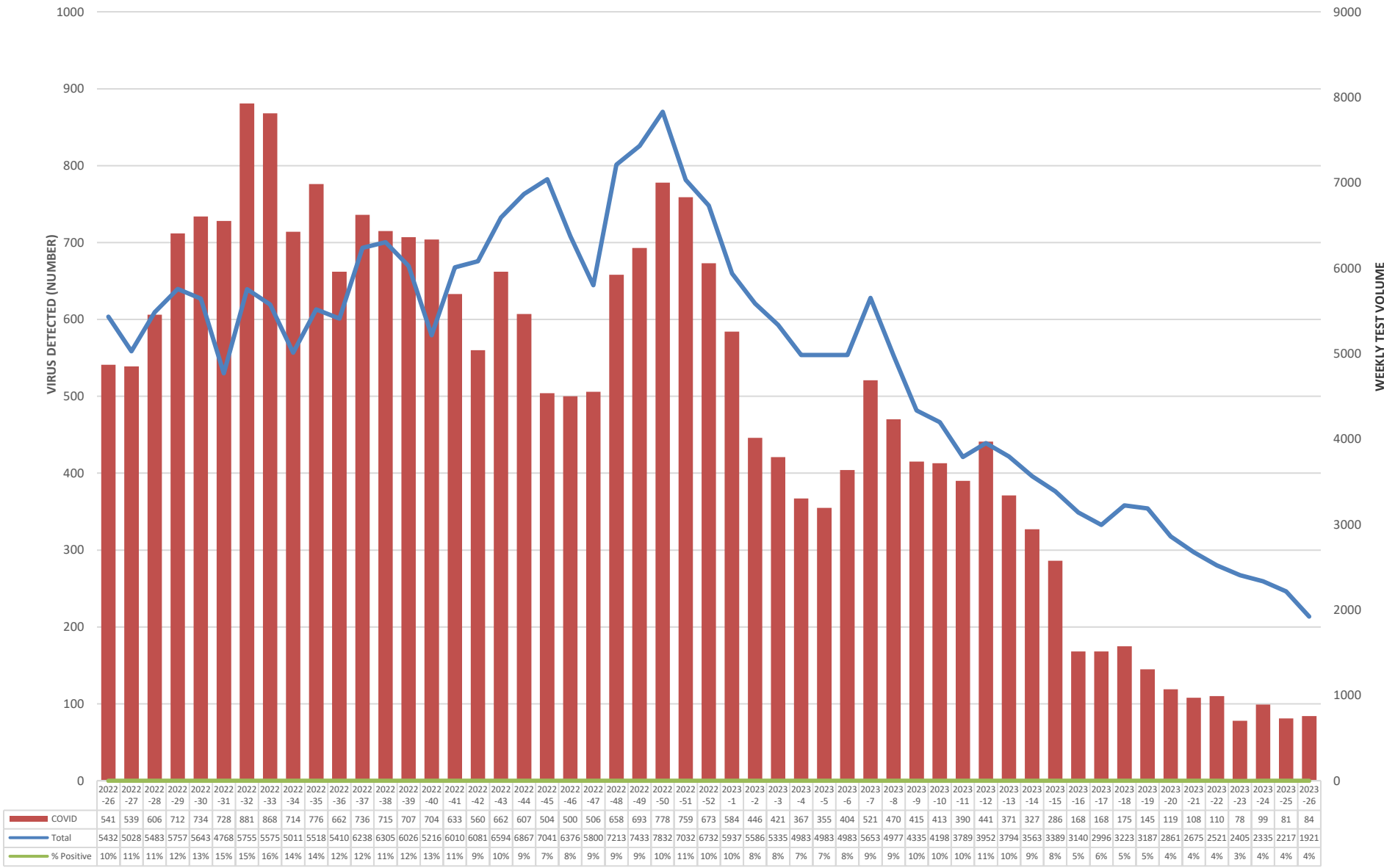
**Beaumont**



\*SARS-CoV-2 data from the RVP is reported on slide 7, CoV data reported above is only seasonal coronaviruses

# Beaumont Laboratory COVID-19 Testing

**Beaumont**



\*Beaumont Laboratory data includes retests that may represent persistent infections. For primary infections only, please refer to the MDHHS website [https://www.michigan.gov/coronavirus/0,9753,7-406-98163\\_98173---,00.html](https://www.michigan.gov/coronavirus/0,9753,7-406-98163_98173---,00.html)

# Beaumont Laboratory Influenza and RSV Testing

**Beaumont**



