

Respiratory Virus Summary (2022-2023 Season)

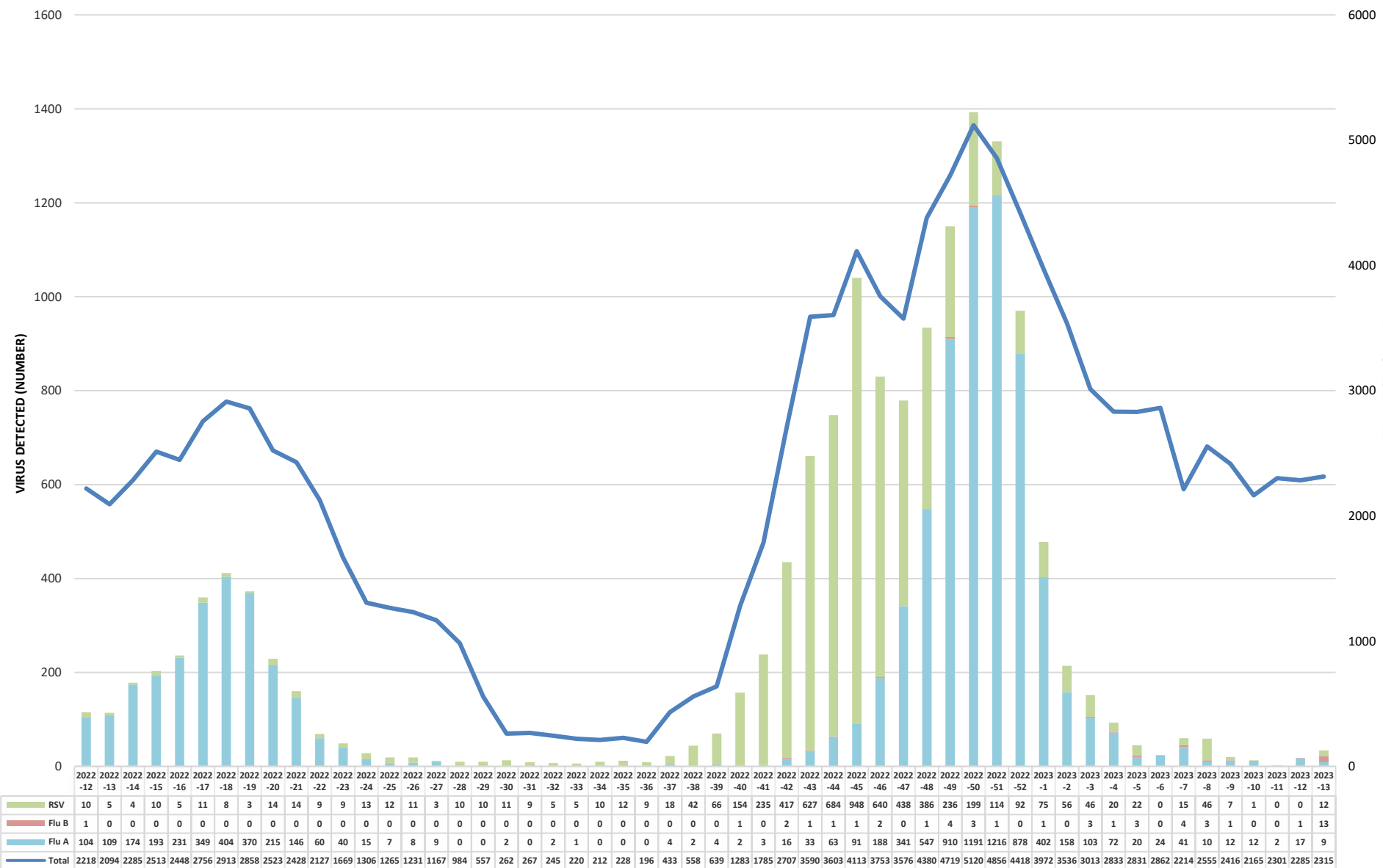
Week: 2023-13

Ending April 1, 2023

Beaumont

Rapid Influenza & RSV by PCR

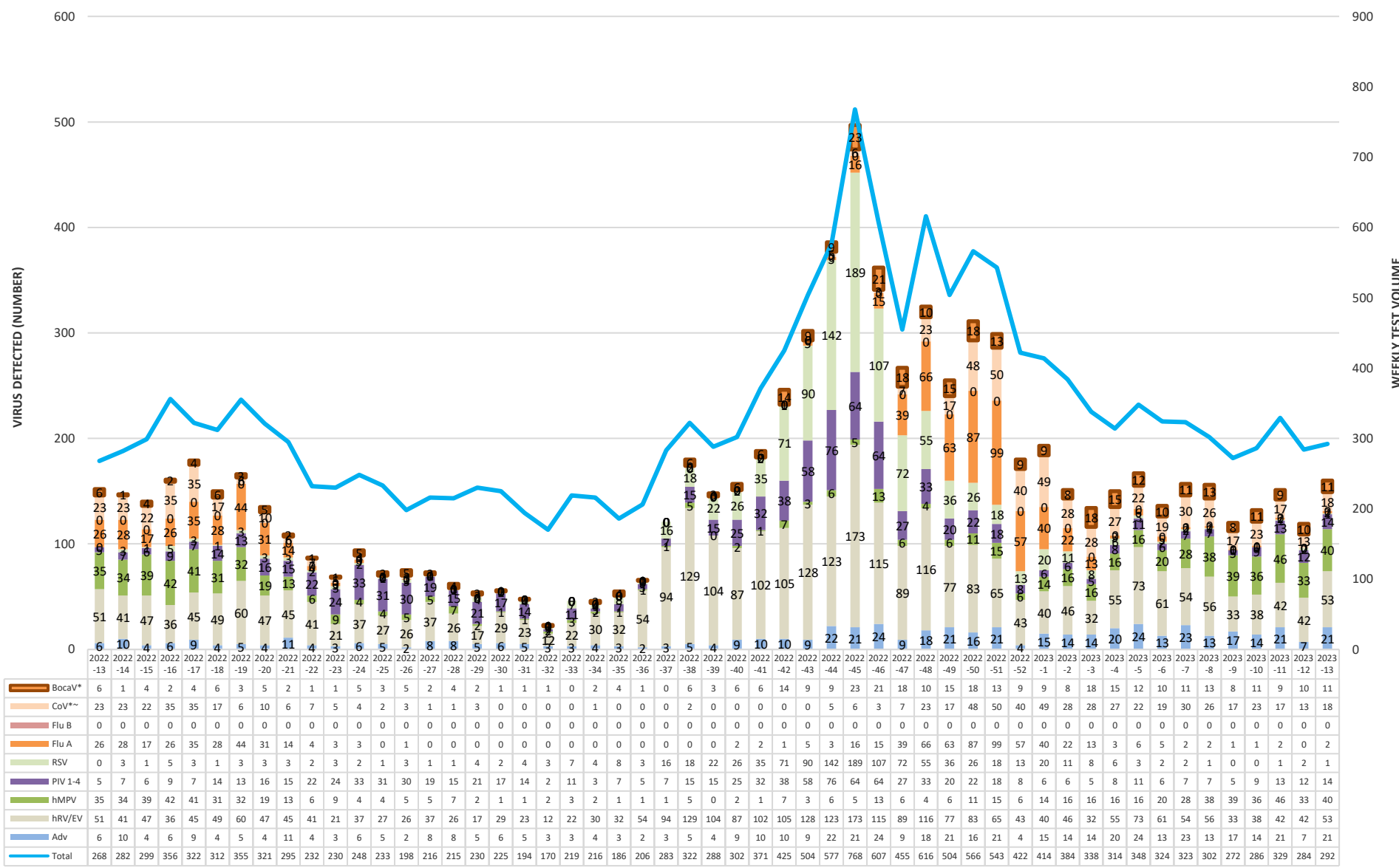
Beaumont



*Dearborn data added starting 2020-40

Respiratory Virus Panel by PCR

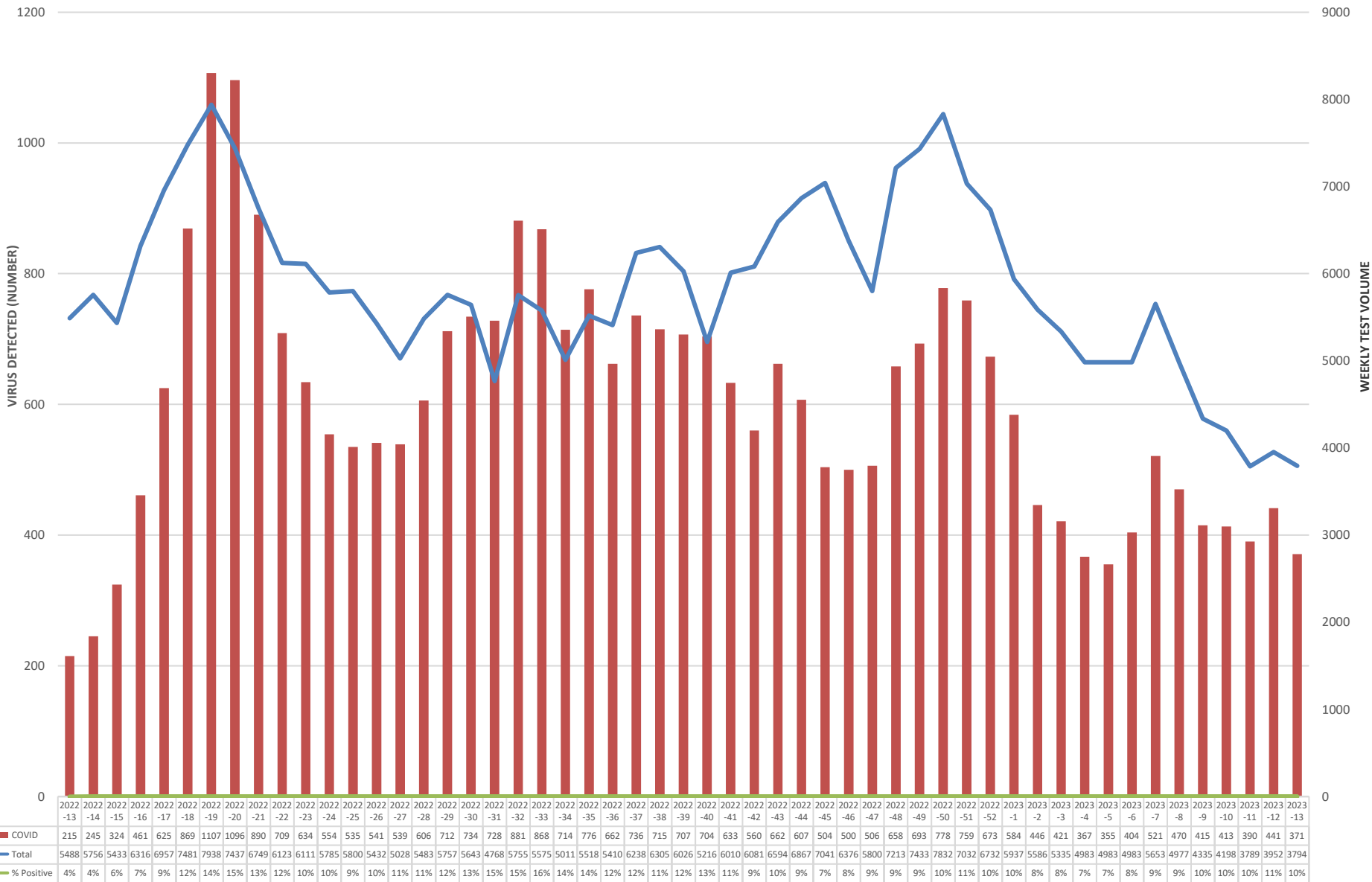
Beaumont



*~SARS-CoV-2 data from the RVP is reported on slide 7, CoV data reported above is only seasonal coronaviruses

Beaumont Laboratory COVID-19 Testing

Beaumont



*Beaumont Laboratory data includes retests that may represent persistent infections. For primary infections only, please refer to the MDHHS website https://www.michigan.gov/coronavirus/0,9753,7-406-98163_98173---,00.html

Beaumont Laboratory Influenza and RSV Testing

Beaumont

