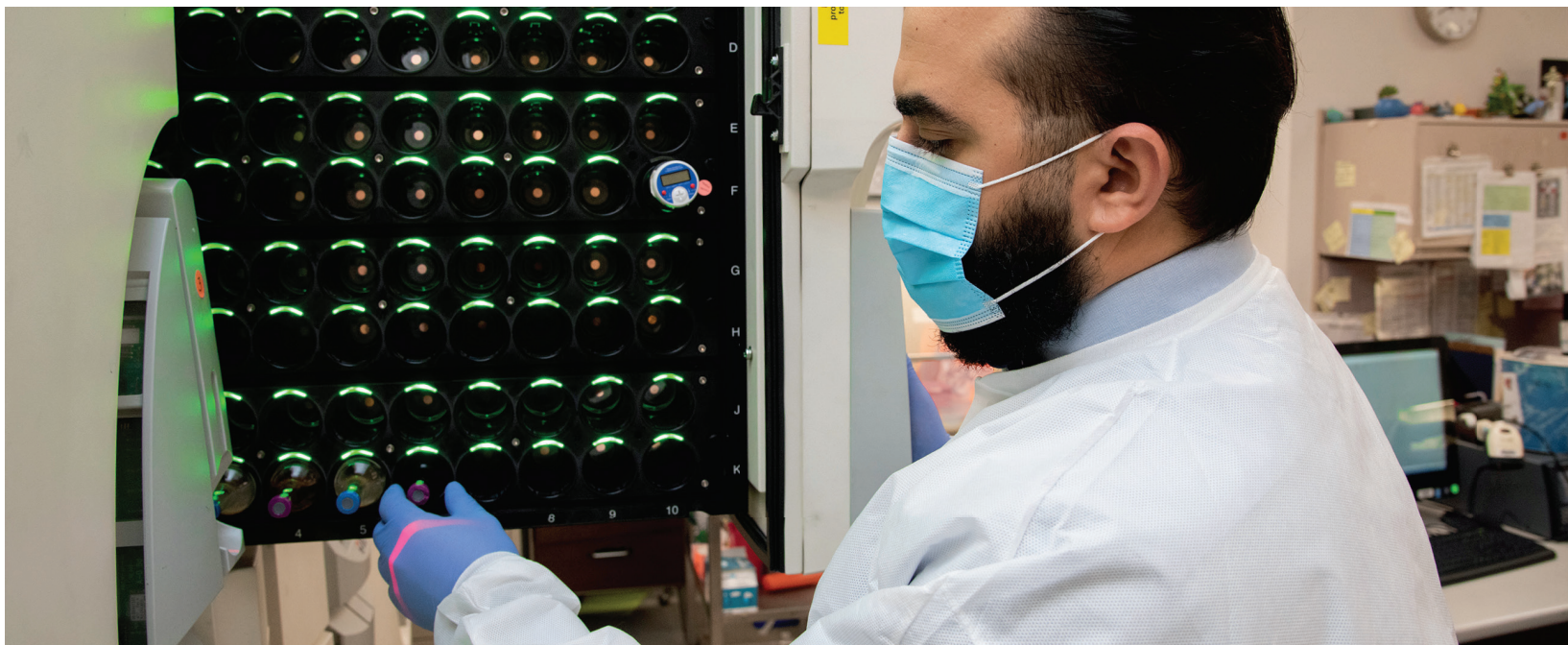


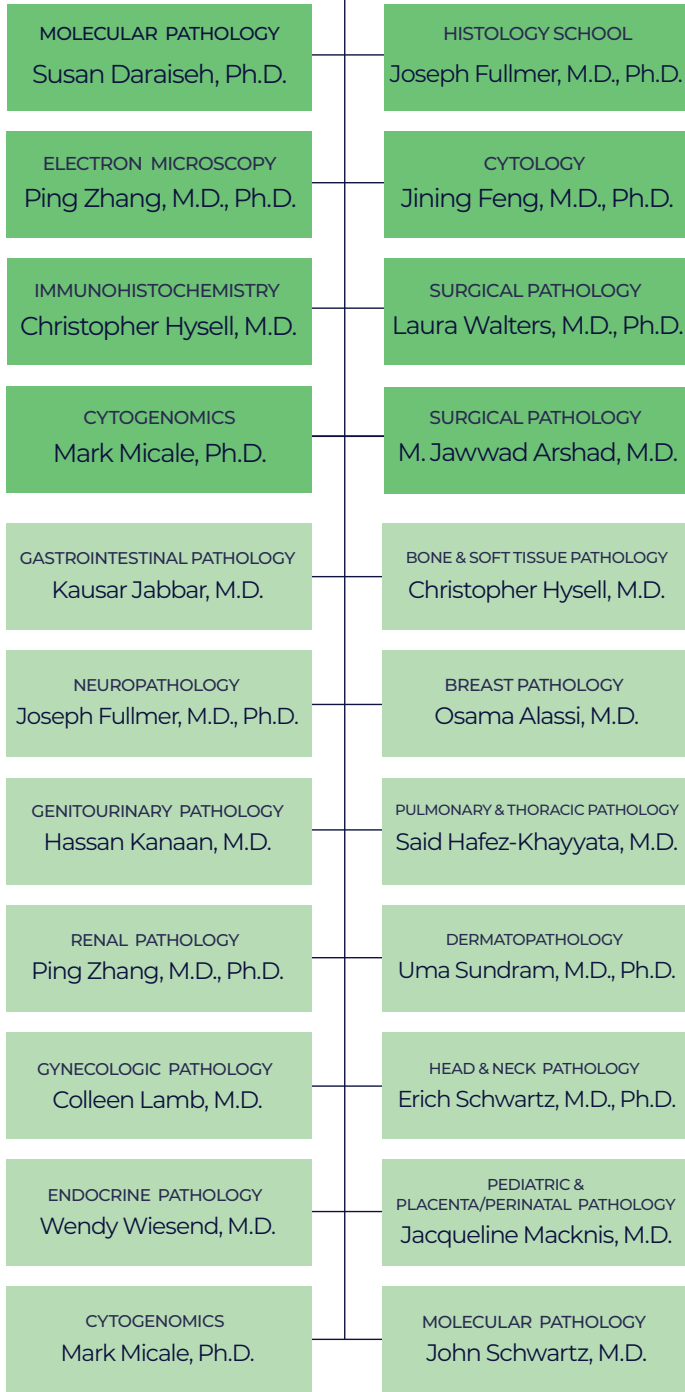
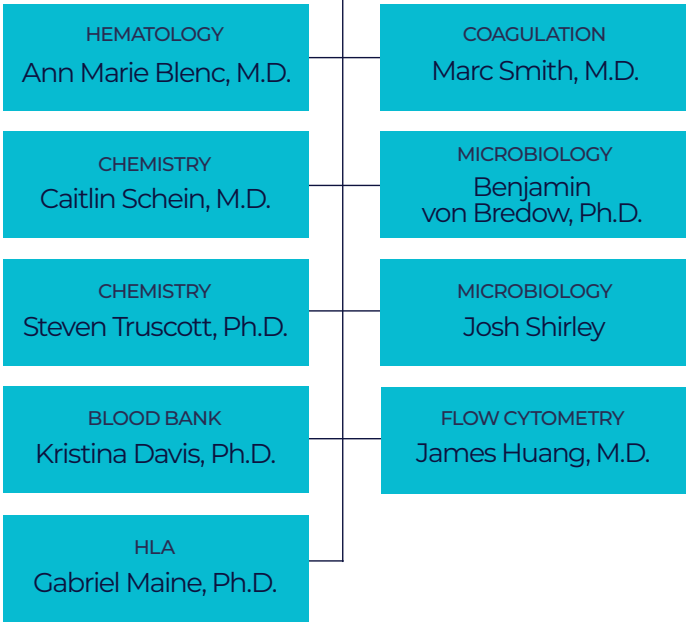
Anatomic & Clinical Pathologists



CHIEF, PATHOLOGY SERVICE LINE
 PHYSICIAN EXECUTIVE CHE MEDICAL GROUP
 CHAIR, DEPARTMENT OF PATHOLOGY
 Kurt Bernacki, M.D.

CLINICAL PATHOLOGY DIRECTORS

ANATOMIC PATHOLOGY DIRECTORS



Advanced Diagnostics	Histology
Blood Bank	Human Leukocyte Antigen
Chemistry	Immunology
Coagulation	Microbiology
Cytogenetics	Molecular pathology
Cytology	Special Chemistry
Electron Microscopy	Toxicology
Flow Cytometry	Urinalysis
Hematology	



All pathologists at the Corewell Health Laboratories are board certified in Anatomic **and/or** Clinical Pathology by the American Board of Pathology.





Ann Marie Blenc, M.D.

Chief of Clinical Pathology, Corewell Health East
System Medical Director, Hematology

ASSOCIATE PROFESSOR

Department of Pathology and Laboratory Medicine
Oakland University William Beaumont School of Medicine

SUBSPECIALTY CERTIFICATION

Hematology, American Board of Pathology



Xia Chen, M.D.

Senior Pathologist, Hematopathology and Diagnostic Lead,
Breast Pathology, Royal Oak

ASSOCIATE PROFESSOR

Department of Pathology and Laboratory Medicine
Oakland University William Beaumont School of Medicine

SUBSPECIALTY CERTIFICATION

Hematology, American Board of Pathology



Kristina A. Davis, M.D.

System Medical Director, Blood Bank and Transfusion Medicine, Corewell Health East

ASSISTANT PROFESSOR

Department of Pathology and Laboratory Medicine
Oakland University William Beaumont School of Medicine

SUBSPECIALTY CERTIFICATION

Blood Bank and Transfusion Medicine, American Board of Pathology



James Z. Huang, M.D.

System Medical Director, Flow Cytometry , Corewell Health East
Hematopathology, Royal Oak

ASSOCIATE PROFESSOR

Department of Pathology and Laboratory Medicine
Oakland University William Beaumont School of Medicine

SUBSPECIALTY CERTIFICATION

Hematology, American Board of Pathology



Sarmad H. Jassim, M.D.

Diagnostic Lead, Hematopathology, Royal Oak

ASSISTANT PROFESSOR

Department of Pathology and Laboratory Medicine
Oakland University William Beaumont School of Medicine

SUBSPECIALTY CERTIFICATION

Hematology, American Board of Pathology



Ryan K. Johnson, M.D.

Associate System Medical Director,
Blood Bank and Transfusion Medicine, Corewell Health East
Medical Director, Blood Bank, Troy and Grosse Pointe
Laboratory Medical Director, Livonia

ASSISTANT PROFESSOR

Department of Pathology and Laboratory Medicine
Oakland University William Beaumont School of Medicine

SUBSPECIALTY CERTIFICATION

Blood Bank and Transfusion Medicine, American Board of Pathology



Subhashree Mallika Krishnan, D.O., MPH

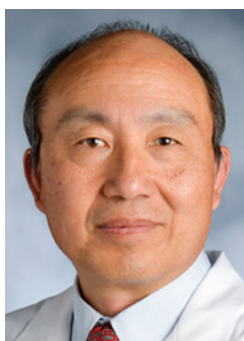
Associate Medical Director, Automated Chemistry, Urinalysis and Toxicology,
Corewell Health East

ASSISTANT PROFESSOR

Department of Pathology and Laboratory Medicine
Oakland University William Beaumont School of Medicine

BOARD CERTIFICATION

American Board of Histocompatibility and Immunogenetics



Ying Li, M.D., Ph.D.

Hematopathology, Royal Oak

ASSOCIATE PROFESSOR

Department of Pathology and Laboratory Medicine
Oakland University William Beaumont School of Medicine

BOARD CERTIFICATION

Hematology, American Board of Pathology
Anatomic and Clinical Pathology, American Board of Pathology



Gabriel N. Maine, Ph.D.

Director, Histocompatibility Laboratory, Corewell Health East
Technical Director, Immunology, Special Chemistry, Royal Oak

ASSOCIATE PROFESSOR

Department of Pathology and Laboratory Medicine
Oakland University William Beaumont School of Medicine

BOARD CERTIFICATION

Fellow, American Board of Histocompatibility and Immunogenetics (ACHI)
Diplomate, American Board of Medical Laboratory Immunology (ABMLI)



Olabisi Oloyen-Afolayan, M.D., M.P.H.

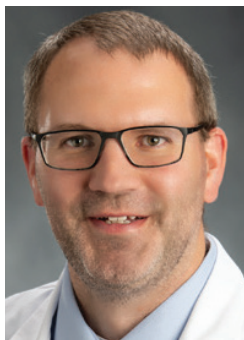
Cytopathology and Hematopathology, Royal Oak

BOARD CERTIFICATION

Fellow, American Board of Histocompatibility and Immunogenetics (ACHI)
Diplomate, American Board of Medical Laboratory Immunology (ABMLI)

SUBSPECIALTY CERTIFICATION

Hematology, American Board of Pathology



Jeremy T. Powers, M.D.

Chief of Pathology, Dearborn
Laboratory Medical Director, Dearborn
Associate Medical Director, Blood Bank and Transfusion Medicine

ASSISTANT PROFESSOR

Department of Pathology and Laboratory Medicine
Oakland University William Beaumont School of Medicine

BOARD CERTIFICATION

Blood Bank and Transfusion Medicine, American Board of Pathology



Caitlin O. Schein, M.D.

System Medical Director, Chemistry, Point of Care, Send Outs, Special Chemistry
and Toxicology; Chemical Pathologist, Corewell Health East

ASSISTANT PROFESSOR

Department of Pathology and Laboratory Medicine
Oakland University William Beaumont School of Medicine

SUBSPECIALTY CERTIFICATION

Chemical Pathology and Hematology, American Board of Pathology



Josh D. Shirley, Ph.D., D(ABMM)

Technical Director, Microbiology and Molecular Pathology, Corewell Health East

ASSISTANT PROFESSOR

Department of Pathology and Laboratory Medicine
Oakland University William Beaumont School of Medicine

BOARD CERTIFICATION

Diplomate, Medical Microbiology, American Board of Medical Microbiology

SPECIAL INTERESTS

Infectious Disease, Molecular Diagnostics, Antimicrobial Susceptibility Testing



Marc D. Smith, M.D.

System Medical Director, Coagulation, Corewell Health East
Hematopathology, Royal Oak

ASSOCIATE PROFESSOR

Department of Pathology and Laboratory Medicine
Oakland University William Beaumont School of Medicine

SUBSPECIALTY CERTIFICATION

Hematology, American Board of Pathology



Qian Sun, Ph.D., DABCC

Technical Director, Automated Chemistry, Corewell Health East
Clinical Chemist, Royal Oak

ASSISTANT PROFESSOR

Department of Pathology and Laboratory Medicine
Oakland University William Beaumont School of Medicine

BOARD CERTIFICATION

Diplomate, Clinical Chemistry, American Board of Clinical Chemistry



Steven M. Truscott, Ph.D., DABCC, FADLM

Technical Director, Clinical Chemistry, Corewell Health East
Technical Director, Special Chemistry and Toxicology, Corewell Health East

ASSISTANT PROFESSOR

Department of Pathology and Laboratory Medicine
Oakland University William Beaumont School of Medicine

BOARD CERTIFICATION

Diplomate, Clinical Chemistry, American Board of Clinical Chemistry
Fellow, Association for Diagnostics and Laboratory Medicine



Benjamin von Bredow, Ph.D., D(ABMM)

Associate Technical Director, Microbiology, Corewell Health East

ASSISTANT PROFESSOR

Department of Pathology and Laboratory Medicine
Oakland University William Beaumont School of Medicine

BOARD CERTIFICATION

Diplomate, Medical Microbiology, American Board of Medical Microbiology

SPECIAL INTERESTS

Infectious Disease, Molecular Diagnostics, Antimicrobial Susceptibility Testing



Syed Y. Zaidi, M.D.

Program Director, Hematopathology Fellowship, Royal Oak
Hematopathology, Royal Oak

ASSISTANT PROFESSOR

Department of Pathology and Laboratory Medicine
Oakland University William Beaumont School of Medicine

SUBSPECIALTY CERTIFICATION

Hematology, American Board of Pathology





Osama M. Alassi, M.D.

Subspecialty Director, Breast Pathology, Dearborn
Cytopathology, Dearborn

ASSISTANT PROFESSOR

Department of Pathology and Laboratory Medicine
Oakland University William Beaumont School of Medicine

SUBSPECIALTY CERTIFICATION

Cytology, American Board of Pathology

SPECIAL INTERESTS

Breast Pathology, Thyroid and Endocrine Pathology



Lubna A. Alattia, M.D., FCAP

Cytopathology, Trenton

ASSISTANT PROFESSOR

Department of Pathology and Laboratory Medicine
Oakland University William Beaumont School of Medicine

SUBSPECIALTY CERTIFICATION

Cytology, American Board of Pathology

ADDITIONAL FELLOWSHIP TRAINING

Surgical Pathology



Jessica D. Anderson-Calleja, M.D.

Hematopathology, Royal Oak

SUBSPECIALTY CERTIFICATION

Hematology, American Board of Pathology



M. Jawwad Arshad, M.D.

System Medical Director, Surgical Pathology, Taylor, Trenton and Wayne
Chief of Pathology, Taylor, Trenton and Wayne;
Medical Director, Canton; Hematopathology, Wayne

ASSISTANT PROFESSOR

Department of Pathology and Laboratory Medicine
Oakland University William Beaumont School of Medicine

SUBSPECIALTY CERTIFICATION

Hematology, American Board of Pathology



Kurt D. Bernacki, M.D.

Chief of Pathology Service Line, Corewell Health East
Chief of Pathology, Corewell Health East
Chair of Pathology, Oakland University William Beaumont School of Medicine
Chief of Anatomic Pathology, Royal Oak
Chief of Pathology, Corewell Health West Bloomfield

ASSOCIATE PROFESSOR

Department of Pathology and Laboratory Medicine
Oakland University William Beaumont School of Medicine

SUBSPECIALTY CERTIFICATION

Cytology, American Board of Pathology



Geetha M. Bhandarkar, M.D.

Cytopathology, Dearborn

SUBSPECIALTY CERTIFICATION

Cytology, American Board of Pathology



Leilei Chen, M.D., Ph.D.

Hematopathology, Troy

ASSOCIATE PROFESSOR

Department of Pathology and Laboratory Medicine
Oakland University William Beaumont School of Medicine

SUBSPECIALTY CERTIFICATION

Hematology, American Board of Pathology



Nancy H. Corpuz, M.D.

Cytopathology, Troy

ASSISTANT PROFESSOR

Department of Pathology and Laboratory Medicine
Oakland University William Beaumont School of Medicine

SUBSPECIALTY CERTIFICATION

Cytology, American Board of Pathology



Susan Daraiseh, Ph.D.

Technical Director, Molecular Pathology and NGS, Corewell Health East

ASSISTANT PROFESSOR

Department of Pathology and Laboratory Medicine
Oakland University William Beaumont School of Medicine

SPECIAL INTERESTS

Next Generation Sequencing, Bioinformatics, Molecular Genomics



Juan Ding, M.D., Ph.D.

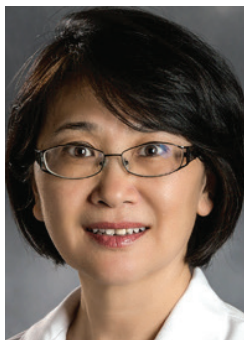
Gynecologic Pathology, Royal Oak

ASSISTANT PROFESSOR

Department of Pathology and Laboratory Medicine
Oakland University William Beaumont School of Medicine

SUBSPECIALTY CERTIFICATION

Hematology, American Board of Pathology



Jining Feng, M.D., Ph.D.

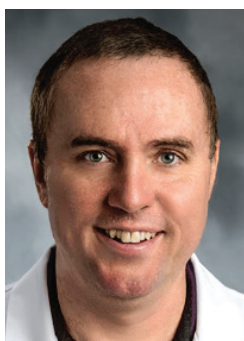
System Medical Director, Cytopathology, Corewell Health East

ASSOCIATE PROFESSOR

Department of Pathology and Laboratory Medicine
Oakland University William Beaumont School of Medicine

SUBSPECIALTY CERTIFICATION

Cytology, American Board of Pathology



Joseph M. Fullmer, M.D., Ph.D.

System Medical Director, Autopsy, Corewell Health East
Surgical Pathologist and Neuropathologist, Royal Oak,
Medical Director, School of Histotechnology, Royal Oak
Subspecialty Director, Neuropathology, Royal Oak

ASSISTANT PROFESSOR

Department of Pathology and Laboratory Medicine
Oakland University William Beaumont School of Medicine

SUBSPECIALTY CERTIFICATION

Neuropathology, American Board of Pathology



Said Hafez-Khayyata, M.D.

Subspecialty Director, Pulmonary and Thoracic Pathology, Royal Oak
Cytopathology, Royal Oak

ASSOCIATE PROFESSOR

Department of Pathology and Laboratory Medicine
Oakland University William Beaumont School of Medicine

SUBSPECIALTY CERTIFICATION

Cytology, American Board of Pathology

SPECIAL INTERESTS

Lung Pathology



Aparna Hariharan, M.D.

Cytopathology, Farmington Hills

ASSISTANT PROFESSOR

Department of Pathology and Laboratory Medicine
Oakland University William Beaumont School of Medicine

SUBSPECIALTY CERTIFICATION

Cytology and Hematology, American Board of Pathology



Sylvia Hayek, M.D.

Cytopathology, Dearborn

SUBSPECIALTY CERTIFICATION

Cytology, American Board of Pathology



Timothy L. Helland, M.D.

Cytopathology, Royal Oak

ASSISTANT PROFESSOR

Department of Pathology and Laboratory Medicine
Oakland University William Beaumont School of Medicine

SUBSPECIALTY CERTIFICATION

Cytology, American Board of Pathology



Christopher K. Hysell, M.D.

System Medical Director, Immunohistochemistry, Corewell Health East
Subspecialty Director, Bone and Soft Tissue Pathology, Royal Oak

ASSOCIATE PROFESSOR

Department of Pathology and Laboratory Medicine
Oakland University William Beaumont School of Medicine

SUBSPECIALTY CERTIFICATION

Cytology, American Board of Pathology

SPECIAL INTERESTS

Bone and Soft Tissue Pathology



Kausar J. Jabbar, M.D.

System Medical Director, Gastrointestinal Pathology, Corewell Health East
Surgical and Molecular Pathologist

ASSISTANT PROFESSOR

Department of Pathology and Laboratory Medicine
Oakland University William Beaumont School of Medicine

SUBSPECIALTY CERTIFICATION

Hematology and Molecular Genetic Pathology, American Board of Pathology

ADDITIONAL FELLOWSHIP TRAINING

Cancer Bio Marker, Gastrointestinal Pathology



Hassan D. Kanaan, M.D.

Hematopathology, Molecular and Breast Pathology, Royal Oak and Grosse Pointe
Subspecialty Director, Genitourinary Pathology, Royal Oak

ASSISTANT PROFESSOR

Department of Pathology and Laboratory Medicine
Oakland University William Beaumont School of Medicine

SPECIAL INTERESTS

Renal Pathology



Colleen A. Lamb, M.D.

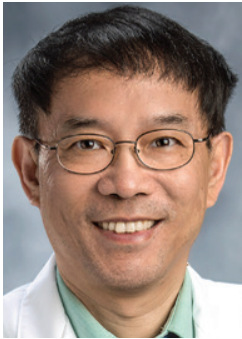
System Medical Director, Gynecologic Pathology, Corewell Health East

ASSISTANT PROFESSOR

Department of Pathology and Laboratory Medicine
Oakland University William Beaumont School of Medicine

ADDITIONAL FELLOWSHIP TRAINING

Gynecologic and Genitourinary Pathology, American Board of Pathology



Wei Li, M.D., Ph.D.

Diagnostic Lead, Gastrointestinal and Liver Pathology, Royal Oak

PROFESSOR

Department of Pathology and Laboratory Medicine
Oakland University William Beaumont School of Medicine

ADDITIONAL FELLOWSHIP TRAINING

Surgical Pathology

SPECIAL INTERESTS

Gastrointestinal, Liver and Renal Pathology



Xin Li, M.D., M.S.

Breast and Gynecologic Pathology, Royal Oak

ASSISTANT PROFESSOR

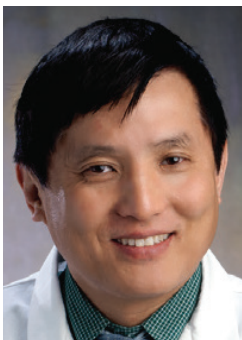
Department of Pathology and Laboratory Medicine
Oakland University William Beaumont School of Medicine

SUBSPECIALTY CERTIFICATION

Clinical and Anatomical Pathology, American Board of Pathology

SPECIAL INTERESTS

Breast and Gynecologic Pathology



James J. Liu, M.D.

Cytopathology, Troy

ASSOCIATE PROFESSOR

Department of Pathology and Laboratory Medicine
Oakland University William Beaumont School of Medicine

SUBSPECIALTY CERTIFICATION

Cytology, American Board of Pathology

SPECIAL INTERESTS

Gastrointestinal, Liver and Pancreas Pathology



Jaqueline K. Macknis, M.D.

Program Director, Pathology Residency Program
Subspecialty Director, Pediatric and Placenta/Perinatal Pathology, Royal Oak

ASSOCIATE PROFESSOR

Department of Pathology and Laboratory Medicine
Oakland University William Beaumont School of Medicine

SUBSPECIALTY CERTIFICATION

Pediatric Pathology, American Board of Pathology



Mark A. Micale, Ph.D., FACMG

System Director, Clinical Cytogenomics, Corewell Health East

ASSOCIATE PROFESSOR

Department of Pathology and Laboratory Medicine
Oakland University William Beaumont School of Medicine

BOARD CERTIFICATION

Clinical Cytogenetics, Clinical Molecular Genetics,
American Board of Medical Genetics & Genomics

SPECIAL INTERESTS

Cancer Cytogenetics, Array-based Cytogenomic Analysis



Evelyn C. Polanco, M.D.

Program Director, Cytopathology Fellowship
Cytopathology, Royal Oak

ASSISTANT PROFESSOR

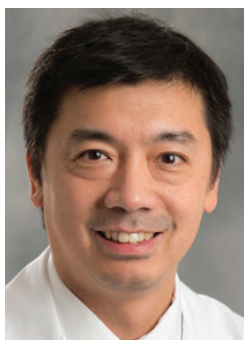
Department of Pathology and Laboratory Medicine
Oakland University William Beaumont School of Medicine

SUBSPECIALTY CERTIFICATION

Cytology, American Board of Pathology

ADDITIONAL FELLOWSHIP TRAINING

Surgical Pathology



John C. Pui, M.D., FCAP, FACS

Chief, Anatomic Pathology, Farmington Hills
Dermatopathology, Farmington Hills

ASSISTANT PROFESSOR

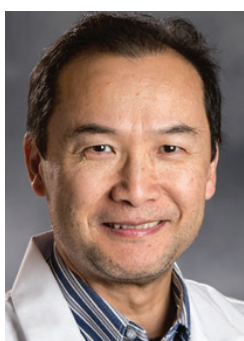
Department of Pathology and Laboratory Medicine
Oakland University William Beaumont School of Medicine

SUBSPECIALTY CERTIFICATION

Dermatopathology, American Board of Pathology

ADDITIONAL FELLOWSHIP TRAINING

Genitourinary and Oncologic Pathology



Zhenhong Qu, M.D., Ph.D.

Diagnostic Lead, Liver and Pancreas Pathology, Royal Oak

PROFESSOR

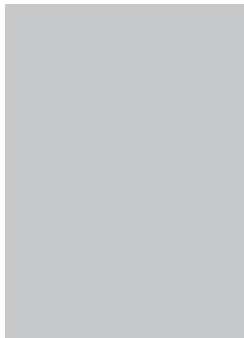
Department of Pathology and Laboratory Medicine
Oakland University William Beaumont School of Medicine

POST DOCTORAL TRAINING

Cell and Molecular Biopsy

SPECIAL INTERESTS

Gastrointestinal, Pancreas and Liver Transplant Pathology,
Immunohistochemistry, Medical Informatics & Artificial Intelligence (AI)



Joy M. Roman, M.D.

Cytopathology, Grosse Pointe

INSTRUCTOR

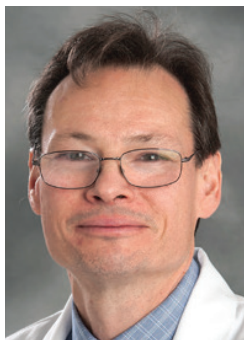
Department of Pathology and Laboratory Medicine
Oakland University William Beaumont School of Medicine

SUBSPECIALTY CERTIFICATION

Cytology, American Board of Pathology

SPECIAL INTERESTS

Bone and Soft Tissue Pathology



Erich J. Schwartz, M.D., Ph.D.

Subspecialty Director, Head and Neck Pathology, Farmington Hills

BOARD CERTIFICATION

Anatomic Pathology, American Board of Pathology

SUBSPECIALTY CERTIFICATION

Cytology and Hematology, American Board of Pathology

ADDITIONAL FELLOWSHIP TRAINING

Immunohistochemistry and Surgical Pathology



John D. Schwartz, M.D.

Medical Director and Subspecialty Director, Molecular Pathology, Royal Oak

ASSISTANT PROFESSOR

Department of Pathology and Laboratory Medicine
Oakland University William Beaumont School of Medicine

SUBSPECIALTY CERTIFICATION

Molecular Genetic Pathology, American Board of Pathology

ADDITIONAL FELLOWSHIP TRAINING

Oncologic and Surgical Pathology



Masood A. Siddiqui, M.D.

Chief of Pathology, Troy
Cytopathology, Troy

ASSOCIATE PROFESSOR

Department of Pathology and Laboratory Medicine
Oakland University William Beaumont School of Medicine

SUBSPECIALTY CERTIFICATION

Cytology, American Board of Pathology

ADDITIONAL FELLOWSHIP TRAINING

Surgical and Breast Pathology



Anjana S. Soman, M.D.

Cytopathology, Dearborn

ASSISTANT PROFESSOR

Department of Pathology and Laboratory Medicine
Oakland University William Beaumont School of Medicine

SUBSPECIALTY CERTIFICATION

Cytology, American Board of Pathology

SPECIAL INTERESTS

Breast and Lung Pathology



Uma N. Sundram, M.D., Ph.D.

Subspecialty Director, Dermatopathology, Royal Oak

PROFESSOR

Department of Pathology and Laboratory Medicine
Oakland University William Beaumont School of Medicine

SUBSPECIALTY CERTIFICATION

Dermatopathology, American Board of Pathology

ADDITIONAL FELLOWSHIP TRAINING

Dermatopathology and Surgical Pathology



Abir A. Tawil, M.D.

Cytopathology, Dearborn

SUBSPECIALTY CERTIFICATION

Cytology, American Board of Pathology

ADDITIONAL FELLOWSHIP TRAINING

Oncological Surgical Pathology

SPECIAL INTERESTS

Breast Pathology



Laura L. Walters, M.D., Ph.D.

System Medical Director, Surgical Pathology, Corewell Health East

ASSISTANT PROFESSOR

Department of Pathology and Laboratory Medicine
Oakland University William Beaumont School of Medicine

ADDITIONAL FELLOWSHIP TRAINING

Breast, Gynecologic and Surgical Pathology



Wendy N. Wiesend, M.D.

Subspecialty Director, Cardiovascular and Endocrine Pathology; Cytopathology, Royal Oak Pathology Discipline Director and Co-Director Diagnostic Medicine Clerkship, Oakland University William Beaumont School of Medicine

ASSISTANT PROFESSOR

Department of Pathology and Laboratory Medicine
Oakland University William Beaumont School of Medicine

SUBSPECIALTY CERTIFICATION

Cytology, American Board of Pathology



Yelena Wilson, D.O.

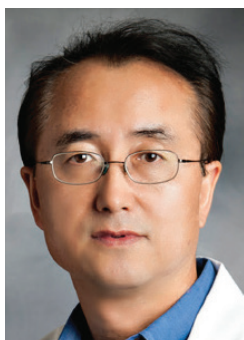
Cytopathology, Royal Oak

ASSISTANT PROFESSOR

Department of Pathology and Laboratory Medicine
Oakland University William Beaumont School of Medicine

SUBSPECIALTY CERTIFICATION

Cytology, American Board of Pathology



Ming Xie, M.D.

Hematopathology, Troy

ASSOCIATE PROFESSOR

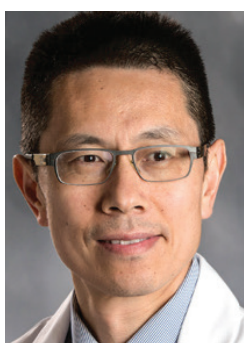
Department of Pathology and Laboratory Medicine
Oakland University William Beaumont School of Medicine

SUBSPECIALTY CERTIFICATION

Hematology, American Board of Pathology

SPECIAL INTERESTS

Genitourinary Pathology and Coagulation



Limin Yu, M.D.

Dermatopathology, Royal Oak

ASSISTANT PROFESSOR

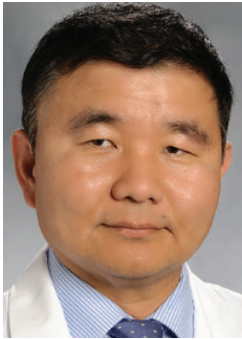
Department of Pathology and Laboratory Medicine
Oakland University William Beaumont School of Medicine

SUBSPECIALTY CERTIFICATION

Dermatopathology, American Board of Pathology

SPECIAL INTERESTS

Pathology Informatics



Harry Zhang, M.D., Ph.D.

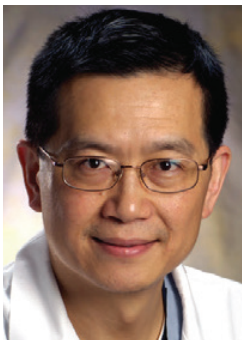
Gastrointestinal, Genitourinary and Thoracic Pathology, Trenton, Wayne

ASSISTANT PROFESSOR

Department of Pathology and Laboratory Medicine
Oakland University William Beaumont School of Medicine

SUBSPECIALTY CERTIFICATION

Hematology, American Board of Pathology



Ping L. Zhang, M.D., Ph.D.

Interim Chief, Anatomic Pathology, Royal Oak
Subspecialty Director, Renal Pathology

PROFESSOR

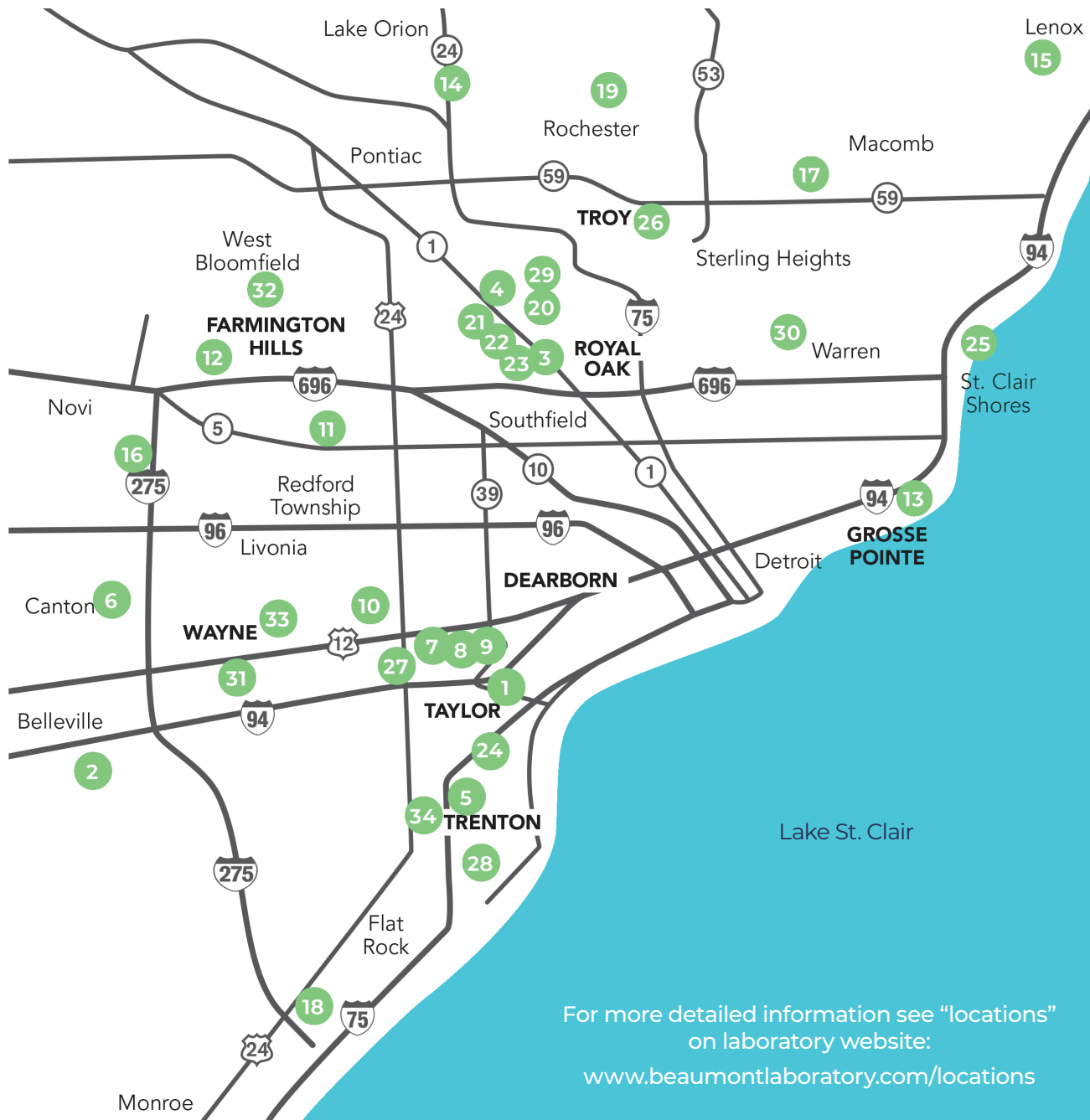
Department of Pathology and Laboratory Medicine
Oakland University William Beaumont School of Medicine

ADDITIONAL FELLOWSHIP TRAINING

Renal Pathology



Corewell Health™ Laboratories



- | | | | |
|----------------------------|----------------------|-----------------------------|---------------------|
| 1. Allen Park | 11. Farmington Hills | 21. Royal Oak Imaging Ctr. | 30. Warren |
| 3. Berkley | 12. Farmington Hills | 22. Royal Oak Cancer Inst. | 31. Wayne |
| 4. Birmingham | 13. Grosse Pointe | 23. Royal Oak Medical Bldg. | 32. West Bloomfield |
| 5. Brownstown | 14. Lake Orion | 24. Southgate | 33. Westland |
| 6. Canton | 15. Lenox | 25. St. Clair Shores | 34. Woodhaven |
| 7. Dearborn | 16. Livonia | 26. Sterling Heights | |
| 8. Dearborn Medical Park | 17. Macomb Township | 27. Taylor | |
| 9. Dearborn Medical Bldg. | 19. Rochester Hills | 28. Trenton | |
| 10. Dearborn Med.Bldg.West | 20. Royal Oak | 29. Troy | |



Department of Pathology and Laboratory Medicine Oakland University William Beaumont School of Medicine

DEPARTMENT CHAIR

Kurt D. Bernacki, M.D.

PROFESSORS

Robert Folberg

Wei Li

Zhenhong Qu

Uma N. Sundram

Ping L. Zhang

ASSOCIATE PROFESSORS

Kurt D. Bernacki

Ann Marie Blenc

Leilei Chen

Xia Chen

Jining Feng

Said Hafez-Khayyata

James Z. Huang

Christopher K. Hysell

Ying Li

James J. Liu

Jaqueline K. Macknis

Gabriel N. Maine

Mark A. Micale

Masood A. Siddiqui

Marc D. Smith

Ming Xie

ASSISTANT PROFESSORS

Osama M. Alassi

Lubna A Alattia

M. Jawwad Arshad

Mark F. Chen

Nancy H. Corpuz

Susan Daraiseh

Kristina A. Davis

Juan Ding

Joseph M. Fullmer

Aparna Hariharan

Timothy L. Helland

Kausar J. Jabbar

Sarmad H. Jassim

Ryan K. Johnson

Hassan D. Kanaan

Colleen A. Lamb

Xin Li

Subhashree Mallika Krishnan

Evelyn C. Polanco

Jeremy T. Powers

John C. Pui

Caitlin O. Schein

John D. Schwartz

Josh D. Shirley

Anjana S. Soman

Qian K. Sun

Steven M. Truscott

Benjamin von Bredow

Laura L. Walters

Wendy N. Wiesend

Yelena Wilson

Limin Yu

Syed Y. Zaidi

Harry Zhang

INSTRUCTOR

Joy M. Roman

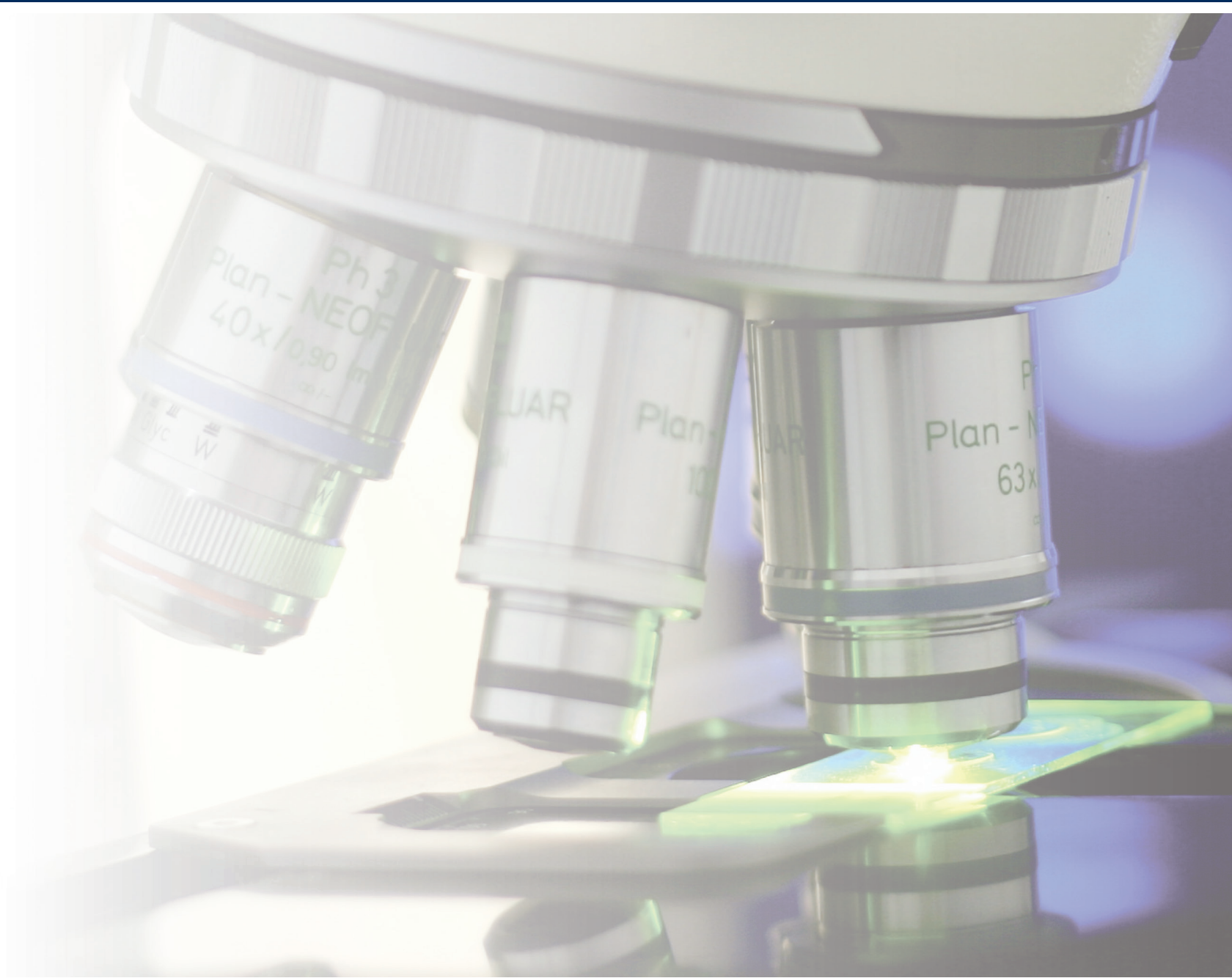
ADJUNCT

ASSOCIATE INSTRUCTOR

Vonda K. Douglas-Nikitin



www.beaumontlaboratory.com



800-551-0488

www.beaumontlaboratory.com